

D. J. Anderson

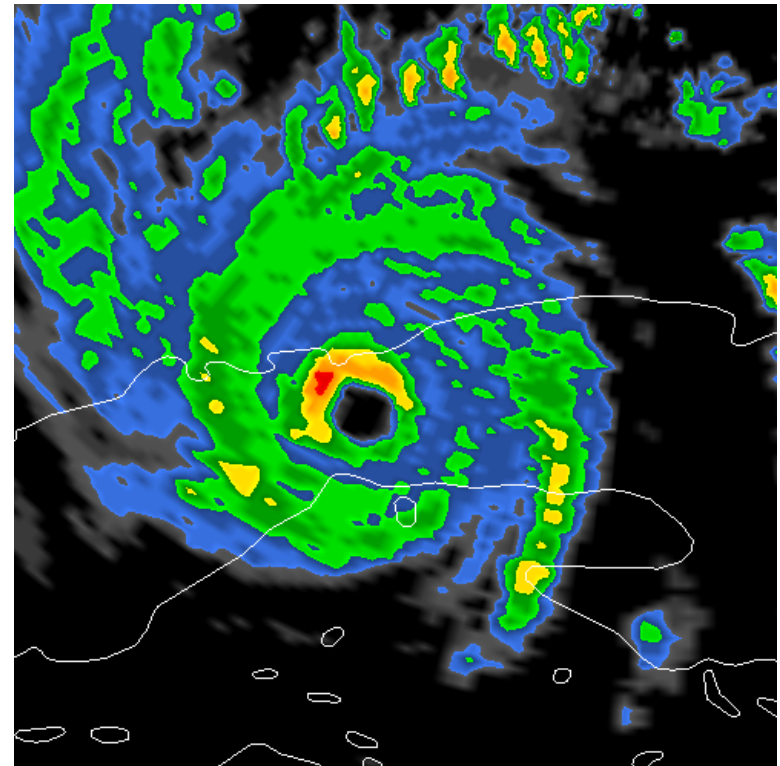
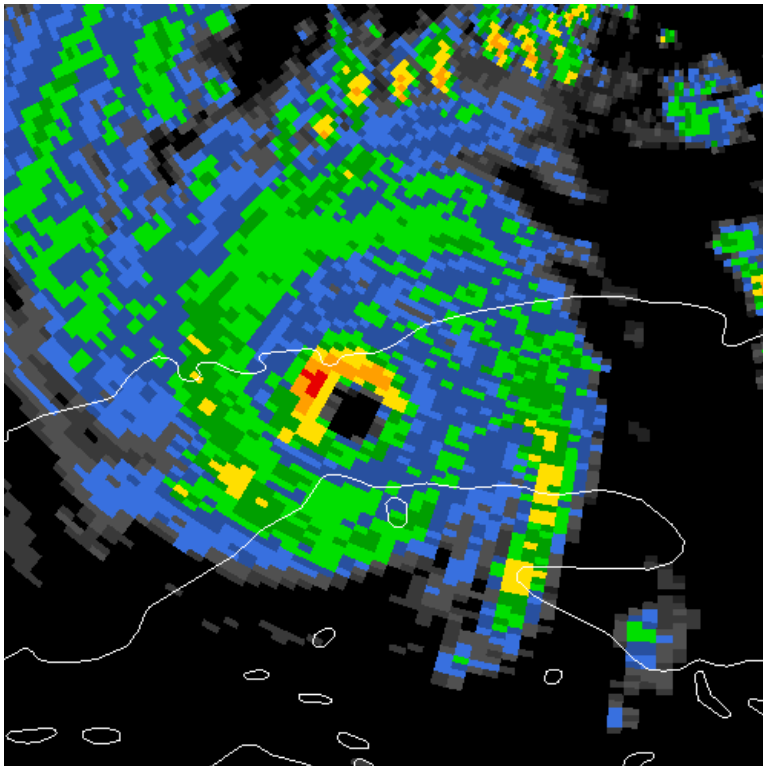
# *GRLevel3 and WeatherScope Software Overview*

# *GRLevel3...What is it?*

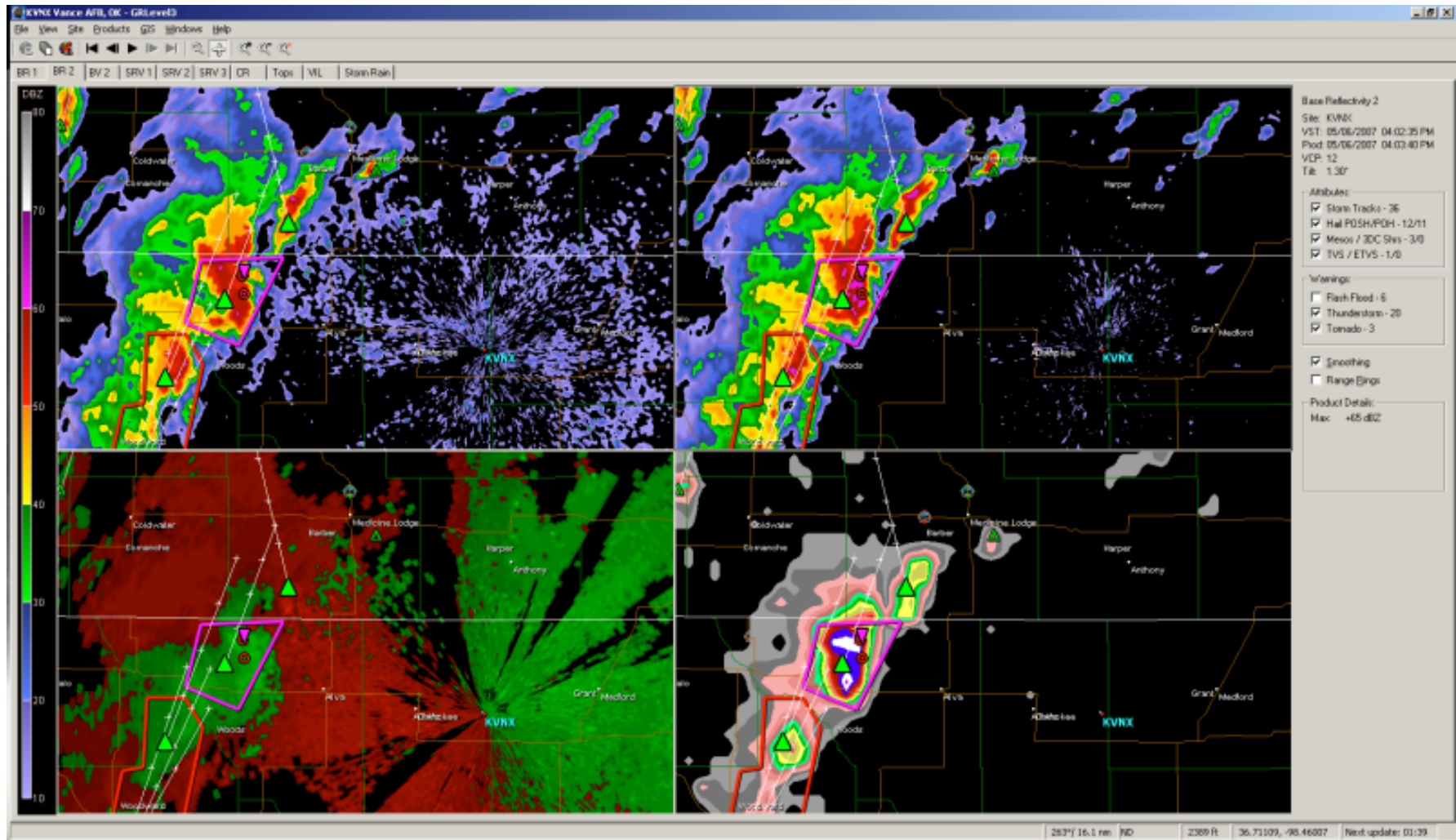
- Radar viewer for Windows
- Displays reflectivity and velocity of several angles, echo tops, and other radar options.
- Can show storm attributes (speed, height, intensity, etc)
- Can implement GIS shapefiles
- Ability to smooth radar pixels
- 4-panel view allows 4 types of radar to be viewed at once!!

# Pixel Smoothing

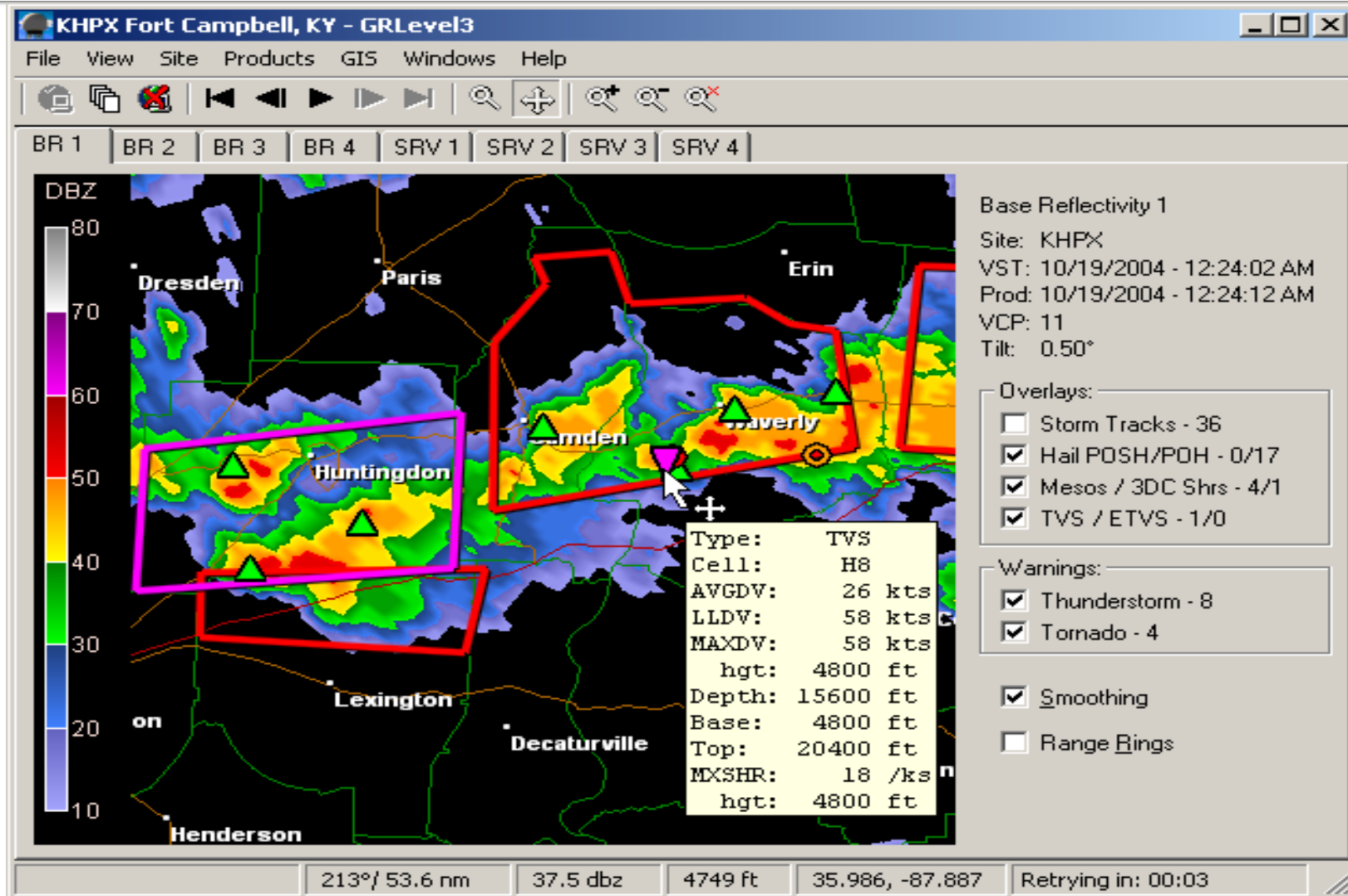
- Hurricane Charley (2004)



# 4-Panel View



# Regular View



## *Where do I find it?*

- GRLevel3 is available at [www.grlevelx.com](http://www.grlevelx.com)
- Cost: \$79.95
- 21 day free trial
- Only available for Windows XP or Vista

# *Weatherscope...What is it?*

- Open-source (free) weather application
- Can view
  - Station plot data
  - Radar reflectivity
  - Upper air data
  - ALL IN ONE!!

# *What Can it Show?*

- Surface station observations
- Upper air observations
- NWS Radar Data (Reflectivity, velocity, echo tops, rainfall totals, etc).
- NWS Advisories



3/17/2009  
4:45 PM CDT

2.54.7  
14.63  
9.32.0

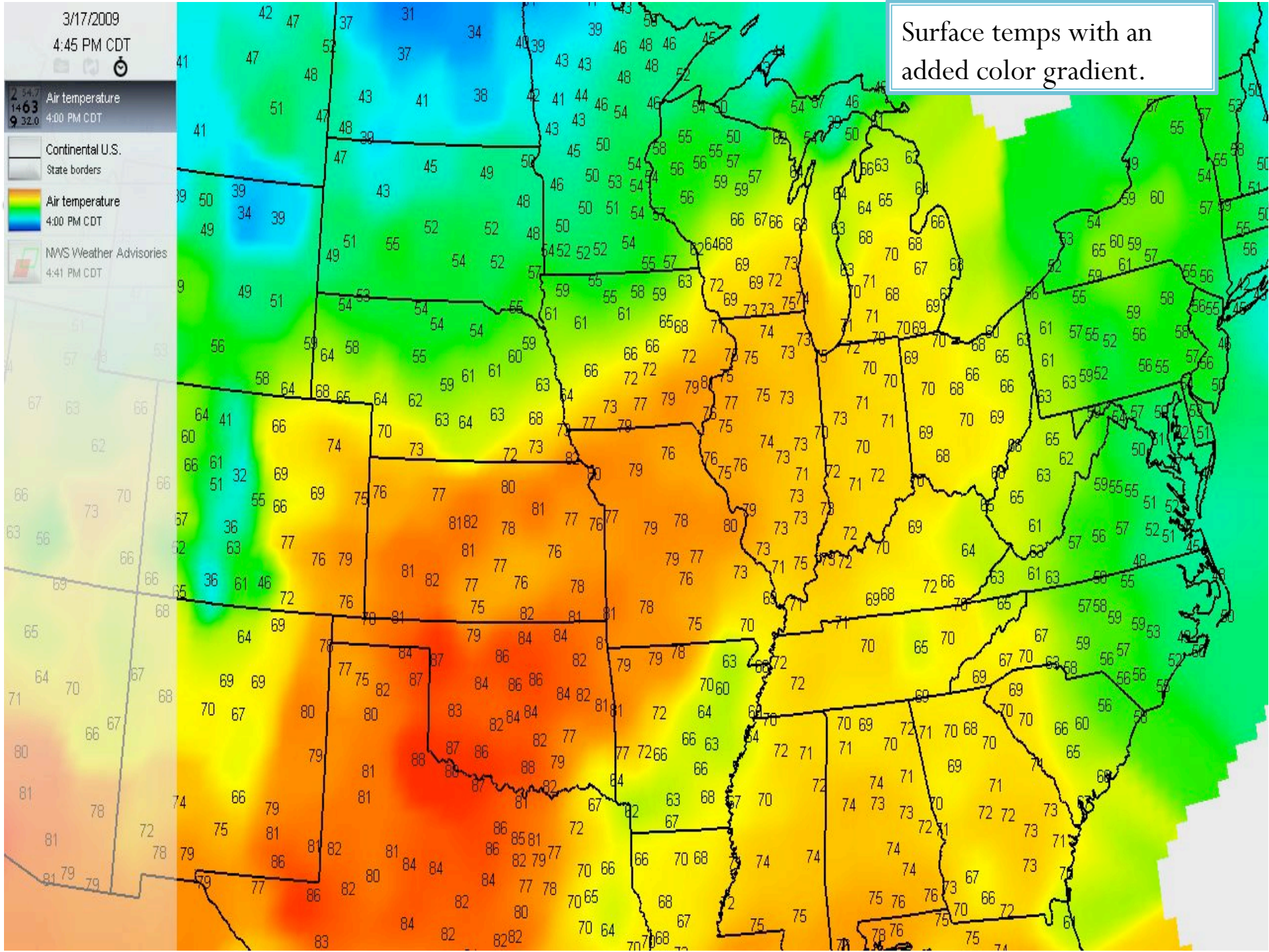
Air temperature  
4:00 PM CDT

Continental U.S.  
State borders

Air temperature  
4:00 PM CDT

NWS Weather Advisories  
4:41 PM CDT

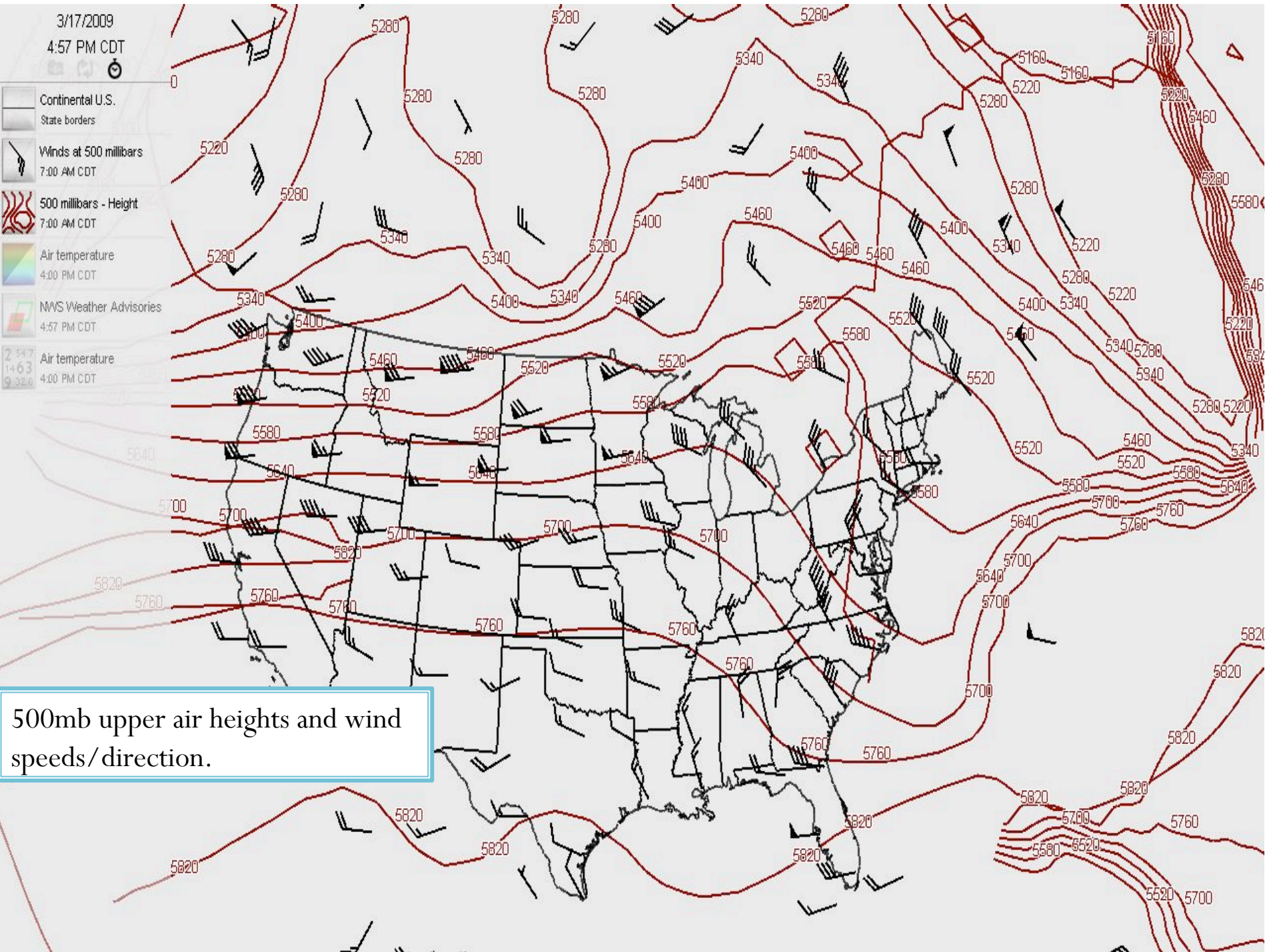
Surface temps with an added color gradient.





3/17/2009  
4:57 PM CDT

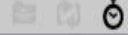
- Continental U.S.  
State borders
- Winds at 500 millibars  
7:00 AM CDT
- 500 millibars - Height  
7:00 AM CDT
- Air temperature  
4:00 PM CDT
- NWS Weather Advisories  
4:57 PM CDT
- Air temperature  
4:00 PM CDT



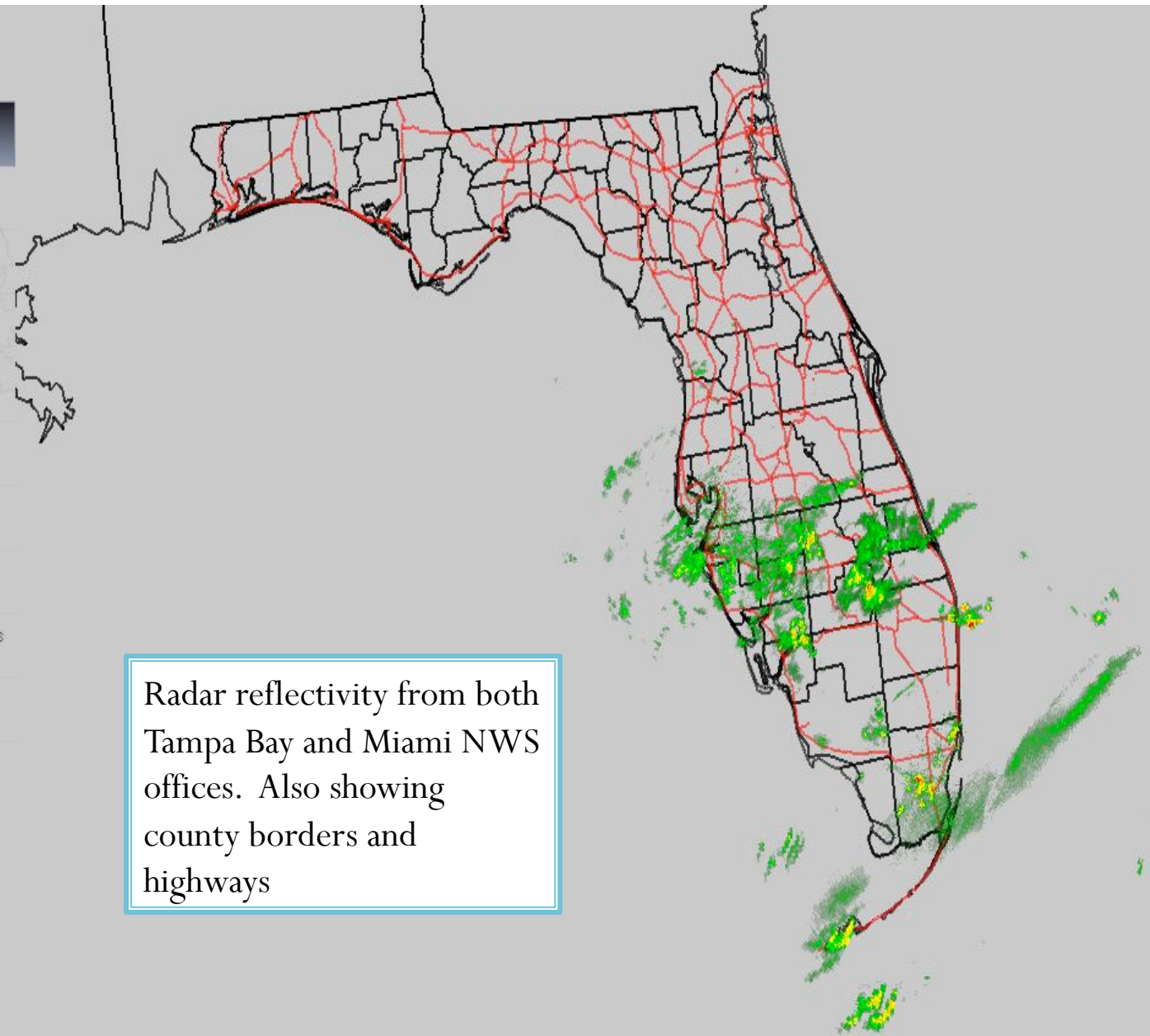
500mb upper air heights and wind speeds/direction.

3/17/2009

5:03 PM CDT



- KTEW - BREF1  
5:01 PM CDT
- KAMX - BREF1  
5:01 PM CDT
- Florida  
Principal highways
- Florida  
County borders
- Continental U.S.  
State borders
- Winds at 500 millibars  
7:00 AM CDT
- 500 millibars - Height  
7:00 AM CDT
- Air temperature  
5:00 PM CDT
- NWS Weather Advisories  
5:01 PM CDT
- 2 54.7  
14.63  
9 32.0  
Air temperature  
5:00 PM CDT



Radar reflectivity from both Tampa Bay and Miami NWS offices. Also showing county borders and highways

*Is It Complicated?*

**NO!**

3/17/2009  
5:06 PM CDT

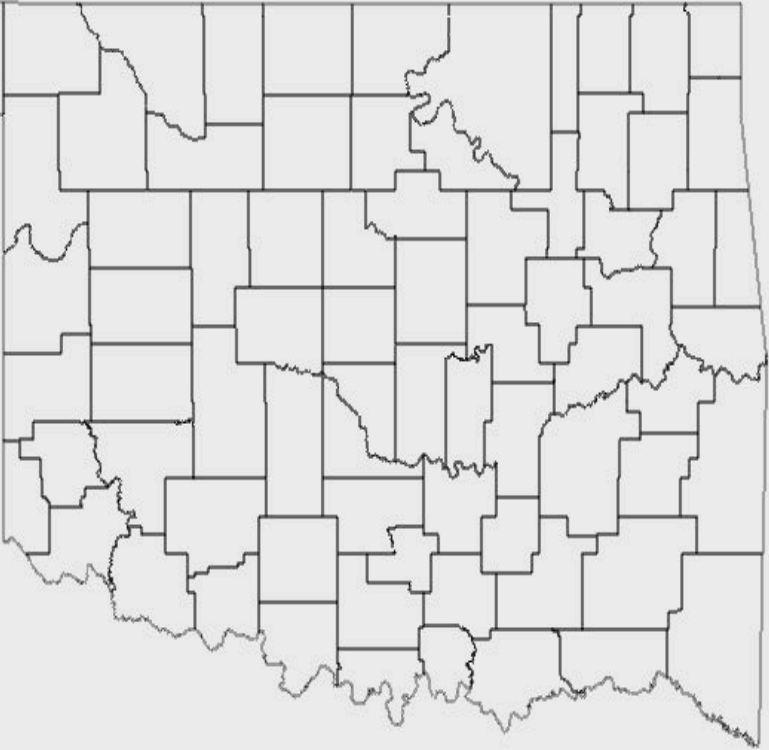
Date/Time

Oklahoma  
County borders

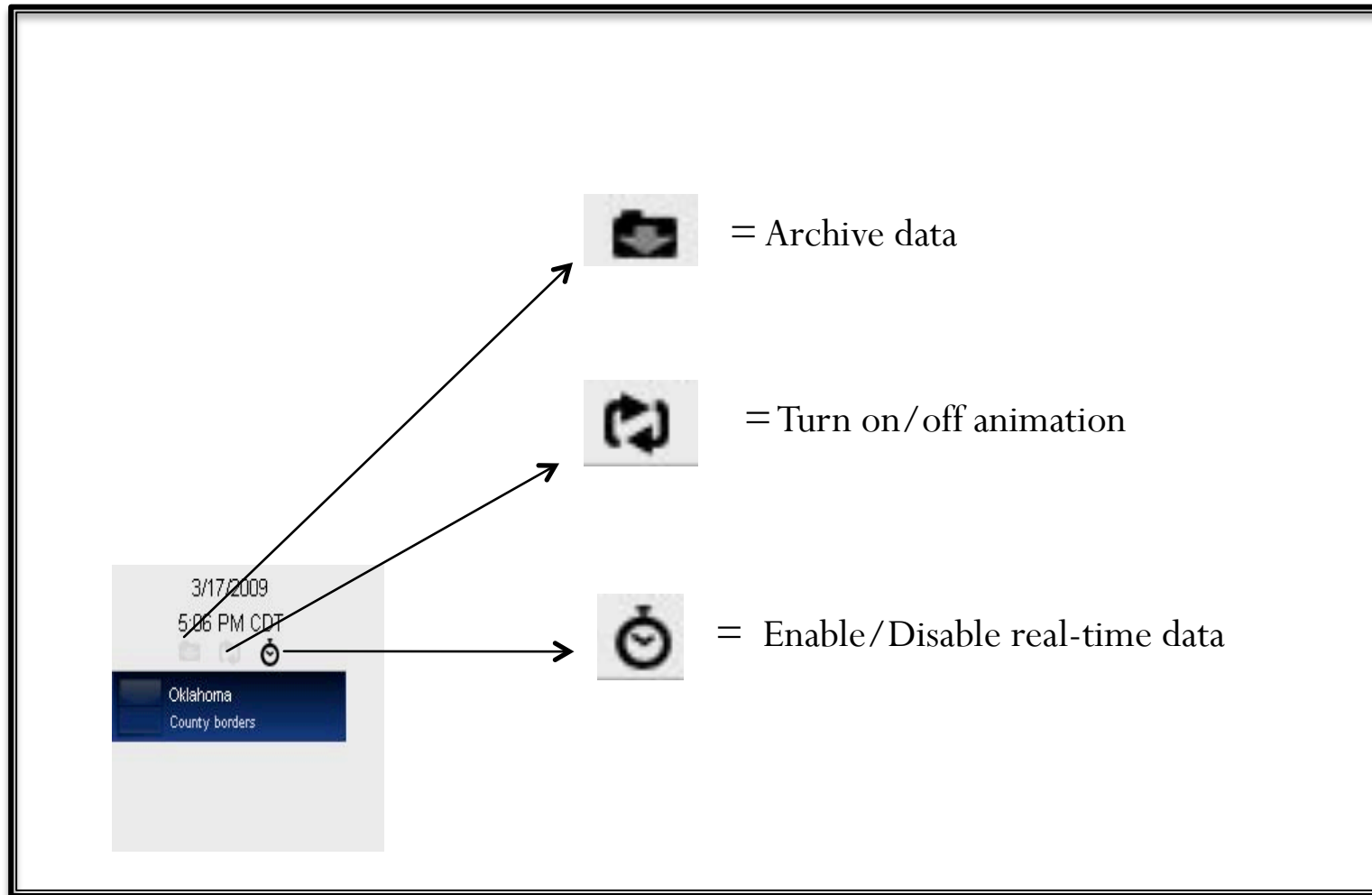
Controls (next slide)

Layers Panel

**“New Map” Screen**



# Archive/Animation/Data Controls





# Layers!!

- Adding layers is as easy as going to the Products menu, then choosing a new observation/radar/state boundary
- To hide a layer, just right click and then choose *Hide*
- To delete a layer, select it and press the delete key.
- If you make a mistake, just select *Properties...* from the right click menu.
- Move layers on top of others to correctly see what you want.
- Limitless possibilities!!

# *It's a Time Machine as Well??*

- WeatherScope can display archived data.
- NOT radar data, or past advisories, but other data (surface obs, upper air, etc) can be found and plotted.
- All the way back to 1940!!!
- Some observations are limited though...



# *Download Today!*

- Go to <http://climate.ok.gov/software/> to download for free.
- Available for both Windows and Macintosh

A man with a mohawk hairstyle, a full beard, and multiple gold chains around his neck is pointing directly at the camera with a serious expression. He is wearing a black vest. A speech bubble is positioned to the left of his head.

Download it  
now foo!!