

Western Illinois University  
Ensemble Placement Auditions  
Fall 2025

Ensemble auditions for the Fall 2025 semester will consist of the following:

1. Major Scales (2 octaves required for music majors)
2. Technical Etude (attached)
3. Lyrical Etude (attached)
4. Sight Reading

Below you will find copies of the etudes as well as links to reference recordings. Feel free to reach out if you have any questions! You will notice that these are the etudes for the upcoming ILMEA audition year. With our studio full of Music Education and Performance students, I want to encourage you all to learn these not just for the ensemble audition, but so that you can feel confident and prepared in reaching out to your former HS programs (or others) and offering to assist their trombone students. This is a priceless experience and something I highly recommend!

Reference Recordings:

- [Tenor Trombone Technical Etude](#)
- [Tenor Trombone Lyrical Etude](#)
- [Bass Trombone Technical Etude](#)
- [Bass Trombone Lyrical Etude](#)

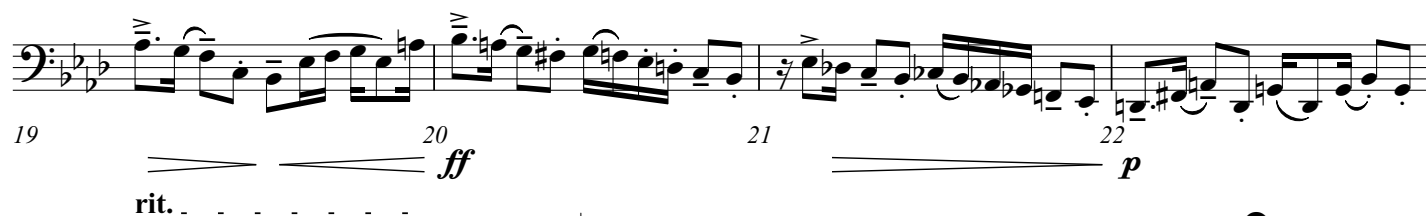
Dr. Walker  
jm-walker6@wiu.edu

# ILMEA Senior Concert Etude - Technical

## Cycle 2 - Bass Trombone

Chris Evan Hass

**Allegro** ♩ = 100-112



# ILMEA Senior Concert Etude - Lyrical

## Cycle 2 - Bass Trombone

Chris Evan Hass

Adagio  $\text{♩} = 80-88$

rit. . . . . , A Tempo

