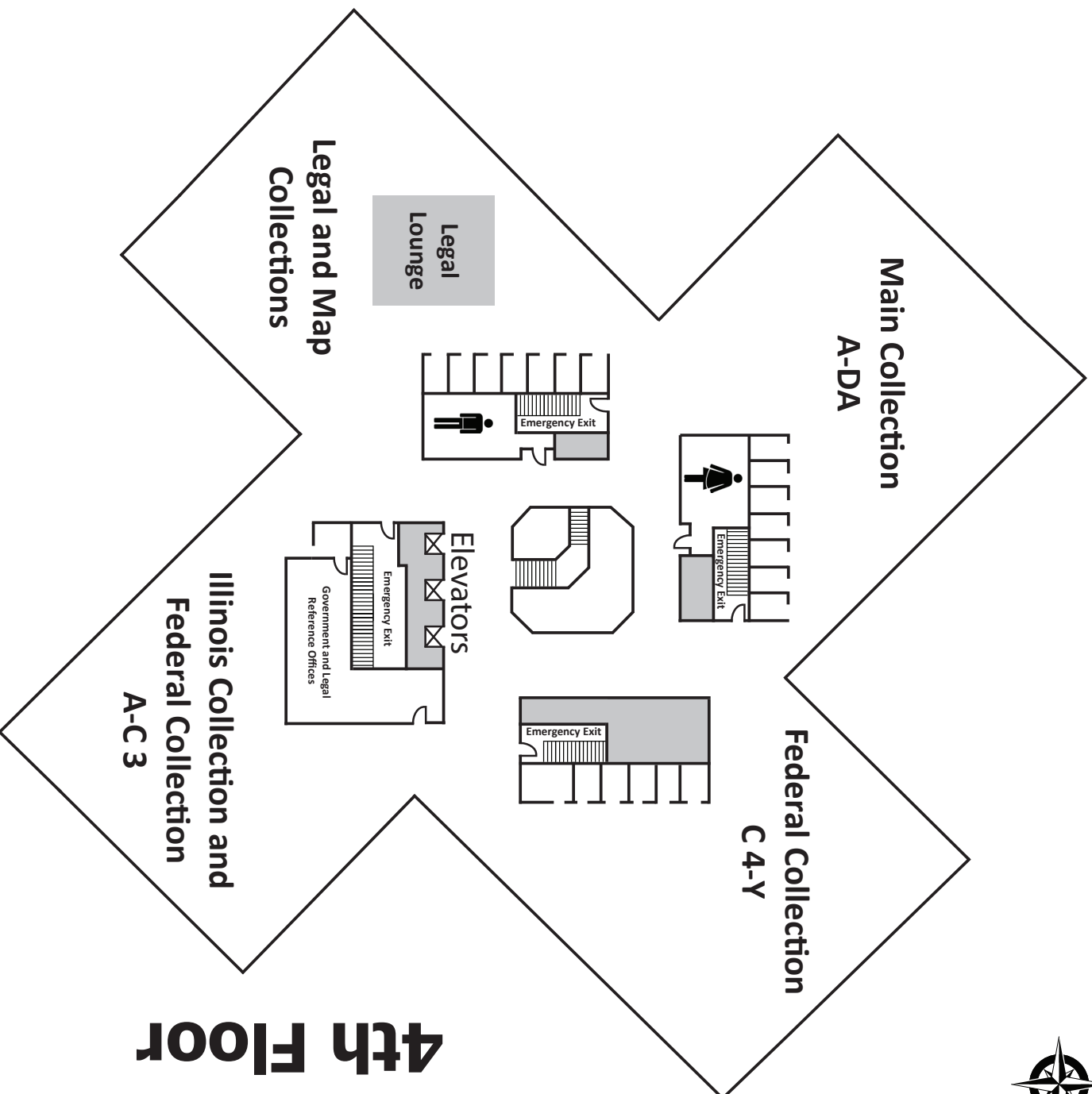


Malpass Library

4th Floor

Western
Avenue



4th Floor



WESTERN
ILLINOIS
UNIVERSITY

A-DA

| |
|--------------------|
| B 2430 to B 3999 |
| B 3999 to BD 431 |
| BD 431 to BF 131 |
| BF 131 to BF 311 |
| BF 311 to BF 456 |
| BF 456 to BF 637 |
| BF 637 to BF 721 |
| BF 721 to BF 1078 |
| BF 1078 to BJ 1481 |
| BJ 1481 to BL 430 |
| BL 435 to BM 157 |
| BM 157 to BR 110 |
| BR 110 to BR 933 |
| BR 935 to BS 1505 |
| BS 1505 to BT 303 |
| BT 303 to BV 5075 |
| BV 5075 to BX 3706 |
| BX 3708 to BX 8207 |

| |
|--------------------|
| DA 566 to DAW 1051 |
| DA 356 to DA 566 |
| DA 17 to DA 356 |
| D 767 to DA 16 |
| D 421 to D 767 |
| D 13 to D 421 |
| CS 421 to D 13 |
| CB 161 to CS 420 |
| BX 8211 to CB 161 |

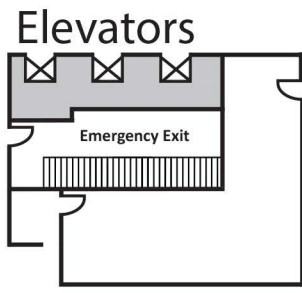
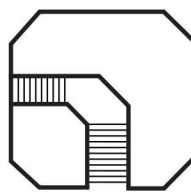
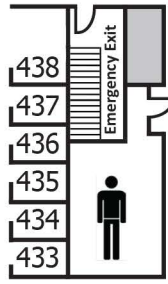
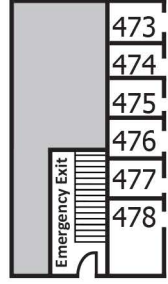
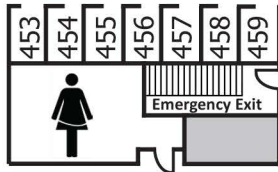
| |
|------------------------|
| Y 3.T to Y 3.2 |
| Y 3.M to Y 3.T |
| Y 3.AT to Y 3.M |
| T 22.35/8: to Y 3.AT |
| SI 1.27: to T 22.35/8: |
| S 1.69: to SI 1.27: |
| PR 37.8: to S 1.69: |

| |
|------------------------|
| LR 1.8: to PR 37.7: |
| L 2.41/2: to LR 1.7: |
| J 1.14/7: to L 2.38/3: |
| I 49.4: to J 1.14/7: |
| I 28.23: to I 49.2: |
| I 19.61: to I 28.23: |
| I 19.16: to I 19.55: |
| I 19.13: to I 19.16: |
| I 19.3: to I 19.13: |
| I 1.1: to I 19.3: |
| HE 20 to HS |
| HE 1.42: to HE 20 |
| FEM 1.8: to HE 1.42: |
| EP 1.2: to FEM 1.8: |
| D 301 to EP 1.2: |
| D 103 to D 301 |
| CR 1.8: to D 103 |
| C 55.8: to CR 1.8: |
| C 21 to C 55.8: |
| C 4 to C 21 |

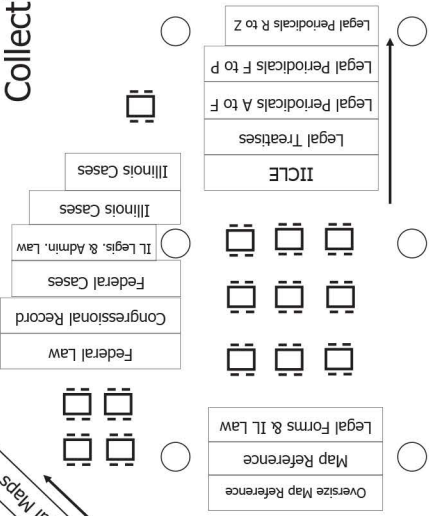
| |
|----------------------|
| Y 4.W to Y11 |
| Y 4.T 24 to Y 4.W |
| Y 4.SCI to Y 4.T 19 |
| Y 4.P 96 to Y 4.SCI |
| Y 4.L 11 to Y 4.P 96 |
| Y 4.IN to Y 4.L 11 |
| Y 4.G74 to Y 4.IN |
| Y 4.F 49 to Y 4.G 74 |
| Y 4.ED to Y 4.F 49 |
| Y 4.B85 to Y 4.ED |
| Y 4.AT to Y 4.B 85 |
| Y 4.AG to Y 4.AS |
| Y4.AD to Y4.AG |

Federal Publications

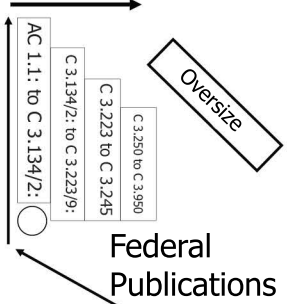
| |
|------------------|
| B 829 to B 2430 |
| B 21 to B 829 |
| AC 1 to B 21 |
| OVERSIZE A to DA |



Legal Reference Collection



Government, Legal, Spatial, and Data Services Office



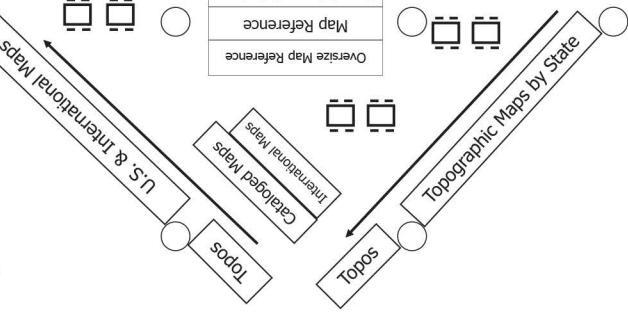
Federal Publications

Indexes
Indexes

Microfilm

| |
|-----------------------|
| A 93.11: to AA |
| A 26.5: to A 93.10/2: |
| A 13.88:: to A 26.5: |
| A 1.76:: to A 13.88: |
| A 1.1: to A 1.76: |

Map Collection



Illinois Documents

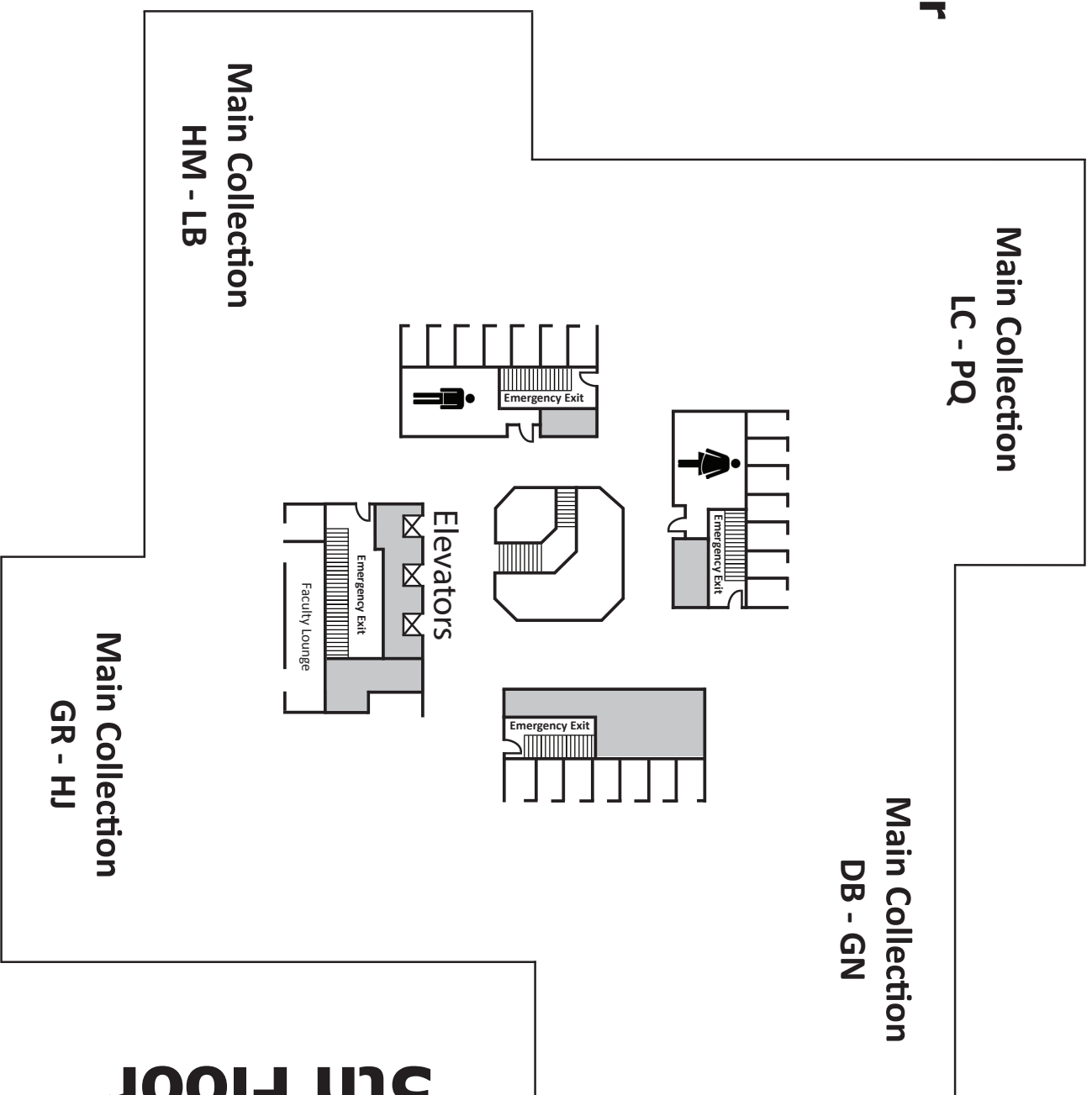
| |
|-----------------------|
| 001.4 to 333.91 |
| 333.91 to 351.8 |
| 351.8 to 364.63 |
| 364.65 to 502 |
| 506 to 625.7 |
| 625.7 to 999 |
| Federal Register |
| Federal Register |
| A 26.5: to A 93.10/2: |
| A 13.88:: to A 26.5: |
| A 1.76:: to A 13.88: |
| A 1.1: to A 1.76: |

Poster Cases

Malpass Library

5th Floor

Western Avenue



5th Floor



WESTERN
ILLINOIS
UNIVERSITY

| |
|--------------------|
| PQ 7797 to PQ 9942 |
| PQ 7085 to PQ 7797 |
| PQ 6573 to PQ 7085 |
| PQ 2631 to PQ 6057 |
| ○ PQ 2435 to PQ |
| PQ 1721 to PQ 2435 |
| PQ 41 to PQ 1721 |
| PN 6110 to PN 6790 |
| PN 4874 to PN 6110 |
| PN 4121 to PN 4874 |
| ○ PN 2596 to PN |
| PN 2270 to PN 2596 |
| PN 2039 to PN 2270 |
| PN 1998 to PN 2039 |

| |
|--------------------|
| NA 680 to NA 9030 |
| NA 9030 to NC 1479 |
| NC 1479 to ND 588 |
| ND 588 to NE 539 |
| NE 539 to NK 7423 |
| NK 7423 to P 57 |
| ○ P 57 to P 121 |
| P 121 to PA 3612 |
| PA 3612 to PA 8045 |
| PA 8051 to PE 1065 |
| PE 1065 to PE 1625 |
| PE 1625 to PG 3337 |
| PG 3337 to PJ 5129 |
| PJ 5129 to PM 4068 |
| PM 4070 to PN 145 |
| PN 145 to PN 774 |
| PN 778 to PN 1936 |
| PN 1936 to PN 1995 |
| PN 1995 to PN 1998 |

| |
|----------------------|
| N 6538 to NA 680 |
| ○ N 76 to N 6538 |
| LC 3981 to N 76 |
| LC 31 to LC 3981 |
| OVERSIZE LC to PQ |

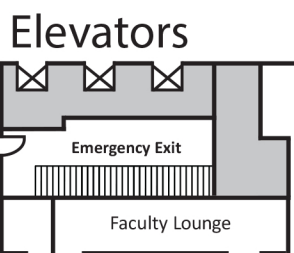
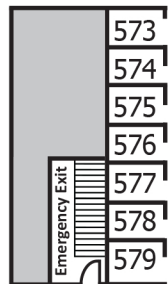
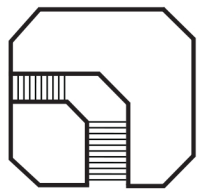
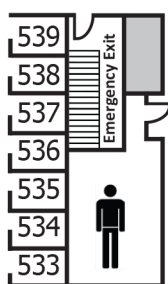
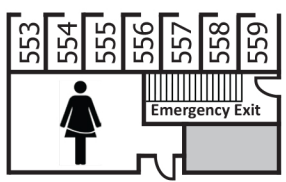
LC-PQ

| |
|--------------------|
| ○ DG 737 to DK 268 |
| DD 403 to DG 737 |
| DC 150 to DD 403 |
| DB 17 to DC 150 |
| OVERSIZE DB to GN |

DB-GN

| |
|------------------|
| DK 268 to DQ 17 |
| DQ 23 to DS 71 |
| DS 71 to DS 135 |
| DS 135 to DS 478 |
| DS 478 to DS 581 |
| DS 581 to DS 779 |
| DS 779 to DT 30 |
| DT 30 to DT 476 |
| DT 476 to DU 172 |
| DU 172 to E 90 |
| E 90 to E 161 |
| E 161 to E 174 |
| E 174 to E 183 |
| E 183 to E 184 |
| E 184 to E 185 |
| E 185 to E 302 |
| E 302 to E 398 |
| E 398 to E 467 |
| E 467 to E 660 |

| |
|-------------------|
| GN 492 to GN 890 |
| GN 280 to GN 492 |
| GE 42 to GN 280 |
| G 1422 to GE 42 |
| ○ G 112 to G 1422 |
| F 2131 to G 109 |
| F 1231 to F 2131 |
| F 851 to F 1231 |
| F 548 to F 851 |
| F 229 to F 548 |
| ○ F 67 to F 229 |
| E 813 to F 67 |
| E 747 to E 813 |
| E 682 to E 747 |
| E 660 to E 682 |



Elevators

GR-HJ

| |
|-------------------|
| HB 3732 to HC 59 |
| HB 846 to HB 3732 |
| HB 171 to HB 846 |
| HB 71 to HB 171 |
| ○ H 61 to HB 71 |
| GV 943 to H 61 |
| GV 361 to GV 943 |
| GR 1 to GV 361 |
| OVERSIZE GR to HJ |

| |
|----------------------|
| HC 59 to HC 107 |
| HC 107 to HC 267 |
| HC 267 to HC 30 |
| HC 30 to HD 66 |
| ○ HD 66 to HD 82 |
| HD 82 to HD 1393 |
| HD 1393 to HD 2138 |
| HD 2139 to HD 3616 |
| HD 3616 to HD 5717 |
| HD 5717 to HD 6515 |
| HD 6515 to HD 7289 |
| ○ HD 7289 to HD 8396 |
| HD 8396 to HD 9506 |
| HD 9506 to HD 9710 |
| HD 9710 to HE 566 |
| HE 566 to HF 46 |
| HF 54 to HF 1359 |
| HF 1359 to HF 1480 |

| |
|--------------------|
| HJ 2381 to HJ 9931 |
| HG 8531 to HJ 2381 |
| HG 4910 to HG 8531 |
| HG 4135 to HG 4910 |
| HG 3090 to HG 4135 |
| HG 221 to HG 3088 |
| HF 5810 to HG 221 |
| HF 5549 to HF 5805 |
| HF 5548 to HF 5549 |
| HF 5429 to HF 5548 |
| HF 5415 to HF 5429 |
| HF 3897 to HF 5415 |
| HF 1480 to HF 3896 |

HM-LB

| |
|-------------------|
| ○ HN 80 to HN 761 |
| HN 761 to HQ 518 |
| HQ 518 to HQ 766 |
| HQ 766 to HQ 792 |
| HQ 792 to HQ 1061 |
| ○ HM 291 to HN 80 |
| HM 131 to HM 291 |
| OVERSIZE HM to LB |
| HM 283 to HM 131 |

| |
|--------------------|
| HQ 1061 to HQ 1206 |
| HQ 1206 to HQ 2044 |
| HS 5 to HT 169 |
| HT 169 to HV 11 |
| ○ HV 11 to HV 249 |
| HV 249 to HV 1461 |
| HV 1461 to HV 5748 |
| HV 5751 to HV 6431 |
| HV 6431 to HV 6897 |
| HV 6937 to HV 8843 |
| HV 8843 to HX 84 |
| ○ HX 86 to JA 71 |
| JA 71 to JC 251 |
| JC 251 to JC 585 |
| JC 585 to JK 21 |
| JK 21 to JK 526 |
| JK 526 to JK 2265 |
| JK 2265 to JN 1 |
| JN 1 to JN 955 |

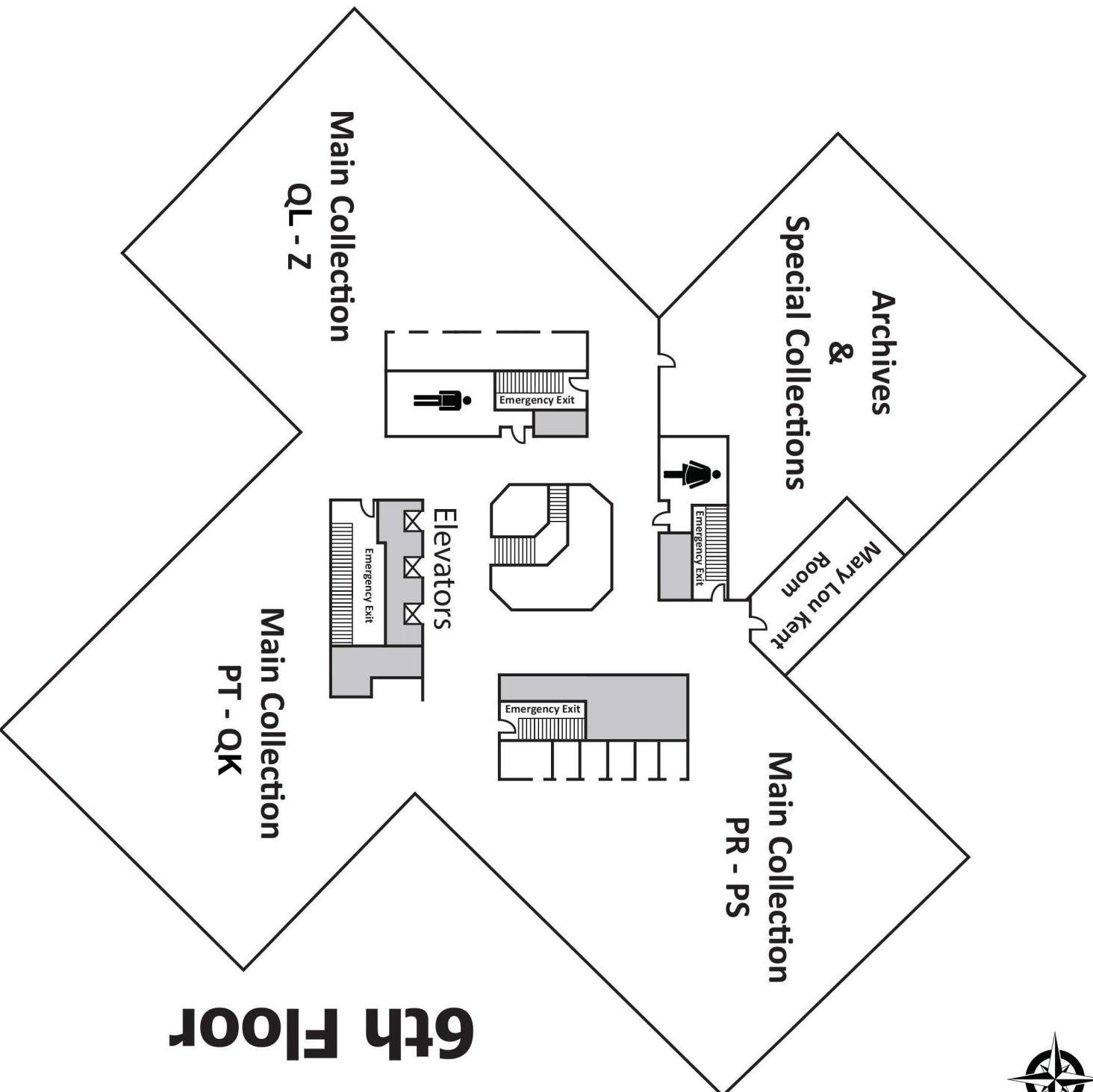
| |
|----------------------|
| LB 2890 to LB 3640 |
| LB 2395 to LB 2890 |
| LB 1737 to LB 2395 |
| ○ LB 1570 to LB 1737 |
| LB 1051 to LB 1570 |
| LB 1028 to LB 1051 |
| LA 227 to LB 1028 |
| KF 8745 to LA 227 |
| KF 3790 to KF 8745 |
| K 2271 to KF 3790 |
| ○ JX 1977 to K 2271 |
| JX 1291 to JX 1977 |
| JS 344 to JX 1291 |
| JN 6598 to JS 344 |
| JN 955 to JN 6598 |

Malpass Library

6th Floor

Western Avenue

6th Floor



Archives & Special Collections

Reading Room with Closed Stacks

Books and materials in this section say ARCHIVES or SPECIAL COLLECTIONS above their call numbers. They are housed in closed stacks. Archives staff will retrieve them for you. They cannot be checked out or leave the reading room.

Because things in this section are unique or rare, no food or drink is allowed in this area. No inkpens or markers. Only pencils, please.

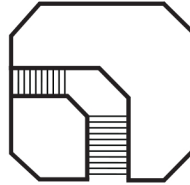
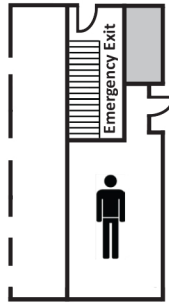
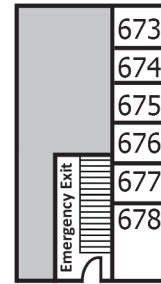
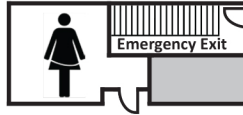
Open Hours are 8:00 - 4:30
Monday - Friday

PR-PS

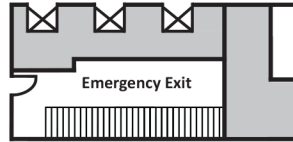
- PR 2802 to PR 2981
- PR 1984 to PR 2802
- PR 1120 to PR 1984
- PR 525 to PR 1120
- PR 1 to PR 525
OVERSIZE PR to PS

- PR 2981 to PR 3481
- PR 3481 to PR 3726
- PR 3726 to PR 4433
- PR 4433 to PR 4740
- PR 4740 to PR 5251
- PR 5251 to PR 5779
- PR 5782 to PR 6005
- PR 6005 to PR 6023
- PR 6023 to PR 6037
- PR 6037 to PR 6061
- PR 6061 to PR 9499
- PR 9499 to PS 228
- PS 228 to PS 507
- PS 507 to PS 663
- PS 663 to PS 1631
- PS 1631 to PS 2320
- PS 2322 to PS 3242

- PS 3571 to PS 6120
- PS 3563 to PS 3571
- PS 3554 to PS 3563
- PS 3545 to PS 3554
- PS 3535 to PS 3545
- PS 3523 to PS 3535
- PS 3511 to PS 3523
- PS 3505 to PS 3511
- PS 3242 to PS 3505



Elevators



PT-QK

- PT 2601 to PT 2637
- PT 1113 to PT 2601
- PT 3 to PT 1113
OVERSIZE PT to QK

- PT 2637 to Q 11
- Q 11 to Q 173
- Q 173 to QA 3
- QA 3 to QA 36
- QA 36 to QA 76.6
- QA 76.6 to QA 76.76
- QA 76.76 to QA 76.9
- QA 76.9 to QA 241
- QA 241 to QA 276
- QA 276 to QA 331
- QA 331 to QA 611
- QA 611 to QB 755.5
- QB 756 to QC 174.17
- QC 174.17 to QC 750
- QC 751 to QD 79
- QD 79 to QD 291
- QD 291 to QD 501
- QD 501 to QE 1

- QK 617 to QK 989
- QK 329 to QK 617
- QK 1 to QK 329
- QH 541.15 to QK 1
- QH 301 to QH 541.25
- QE 862 to QH 301
- QE 471 to QE 862
- QE 71 to QE 471
- QE 1 to QE 71

QL-Z

- QR 251 to R726.5
- QP 609 to QR 251
- QL 751.65 to QP 609
- QL 696 to QL751.65
- QL 101 to QL 626
- QL 626.5 to QL 696
- QL 101 to QL 101
OVERSIZE

- R 726.5 to RA 448.5
- RA 448.5 to RA 805
- RA 807 to RC 200.2
- RC 200.2 to RC 428.5
- RC 428.5 to RC 480.5
- RC 480.5 to RC 537
- RC 537 to RC 626
- RC 627 to RD 755
- RD 755 to RJ 253
- RJ 253 to RM 1
- RM 16 to S 22
- S 22 to S 605.5
- S 605.5 to SB 408
- SB 409 to SB 731
- SB 731 to SF 376
- SF 377 to T 47
- T 47 to T 385
- T 385 to TD 186.5
- TD 186.5 to TH 4817.3
- TH 4817.3 to TJ 843

- Z 7201 to ZA 4251
- Z 2171 to Z 7201
- Z 716 to Z 2171
- Z 278 to Z 716
- UA 23 to Z 278
- TT 557 to UA 23
- TR 790 to TT 555
- TN 870 to TR 787
- TK 9960 to TN 870
- TK 6670 to TK 9960
- TK 4660 to TK 6670
- TJ 843 to TK 4660