



FY 18

Consolidated
Annual
Report

College of Arts & Sciences



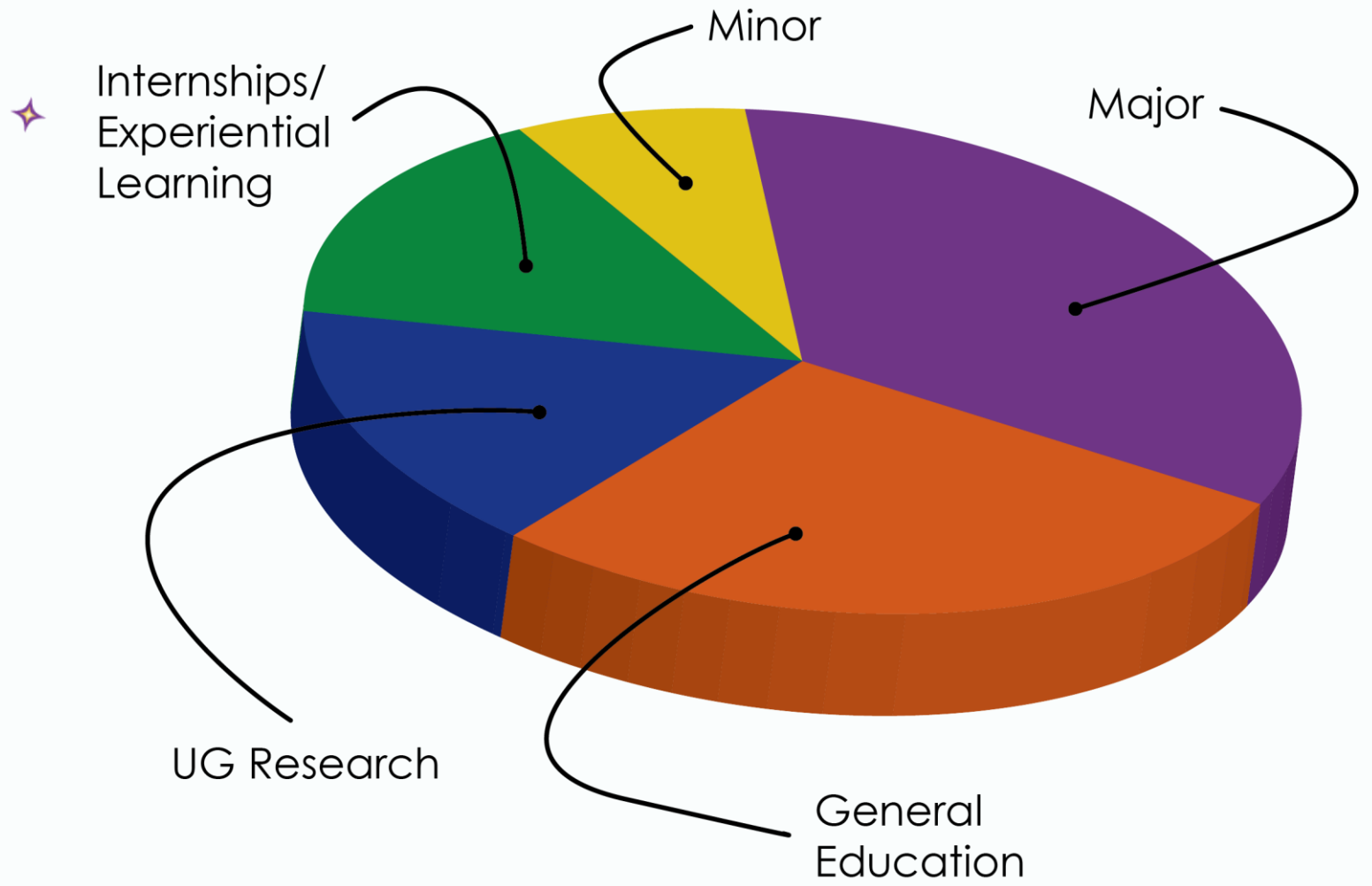
Consolidated Annual RePort

Collaborate

Articulate

Recruit & retain

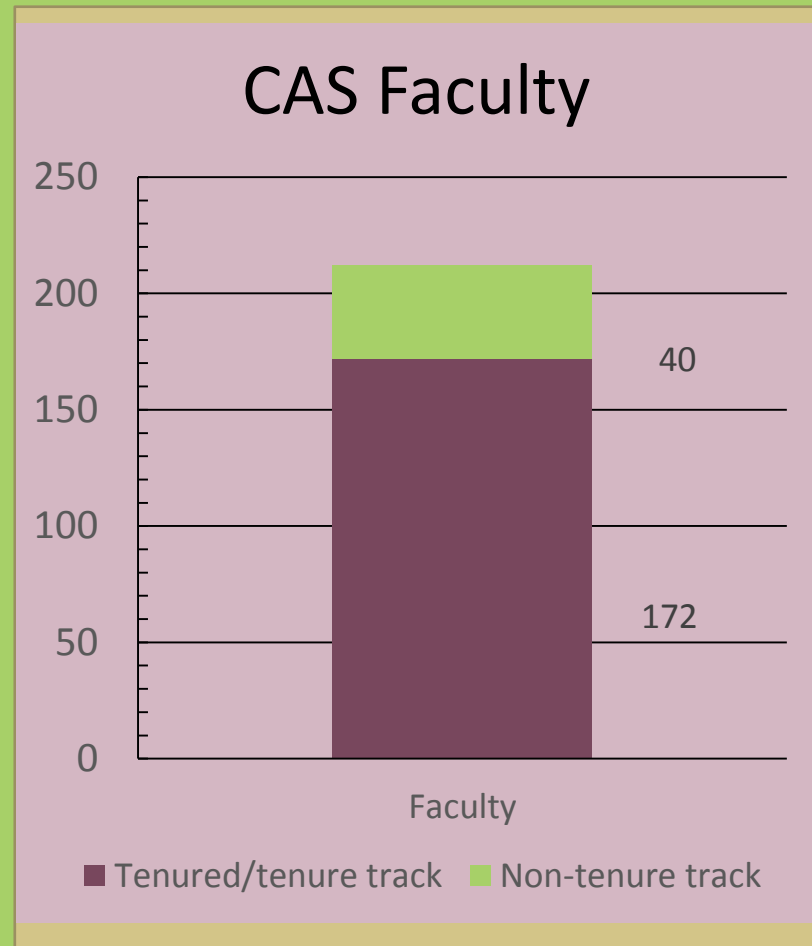
Partner



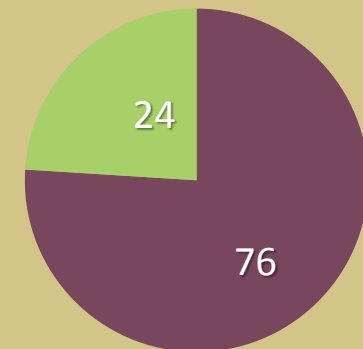
Points of Reference

CAS Students

- 1,800+ UG majors
- 300+ GR majors



% Gen Ed Courses Offered by CAS Faculty



■ CAS ■ Other



FY18 Goals for Academic Success

1. Enhanced Culture for Teaching & Learning
2. Fiscal Responsibility & Accountability
3. Enhance Academic Affairs Role in Enrollment Management & Student Success
4. Focus on International Recruiting & Educational Opportunities
5. Facilities Enhancement & Technology Support



Enhanced Culture for Teaching & Learning



Maintaining Rigor & Academic Standards

Signature Lectures, Conferences, & Programs

John Hallwas Liberal Arts
Lecture

Last Lecture Series
CAS Student Council

Social Entrepreneurship
Salon
WIU QC

Morrow Lecture
BIOL/PHYS

Biology Day
BIOL

Gabler Lecture
GEOG

Magliocco Lecture
ENG

Upper Mississippi River
Conference
IES

Annual Math Teachers
Conference
MATH

Mary Olive Woods Lecture

American Democracy
Project
POLS

Colloquia Series
PSY

Outstanding Students

Lincoln Laureate Nominee
Mary Street (BIOL)



College Scholar, Fall 2017
Benjamin Grober (PHYS & GEOL)



College Scholar, Spring 2018
Francesca Hamm (POLS & ENGL)



Provost's Award Recipients



Scholarly/Professional Activities

Dr. Andrea Porrás-Alfaro (BIOL)

Teaching with Technology

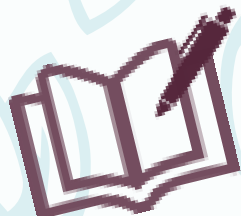
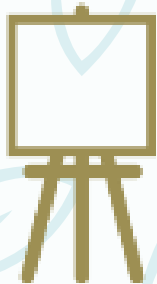
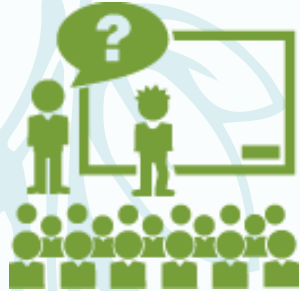
Dr. Rebekah Buchanan (ENGL)

Outstanding Academic Adviser

Ellen Poulter (ENGL)

A top producer of Fulbright
- The Chronicle of Higher Education, 2013
Scholars

Faculty Scholarly & Creative Activities

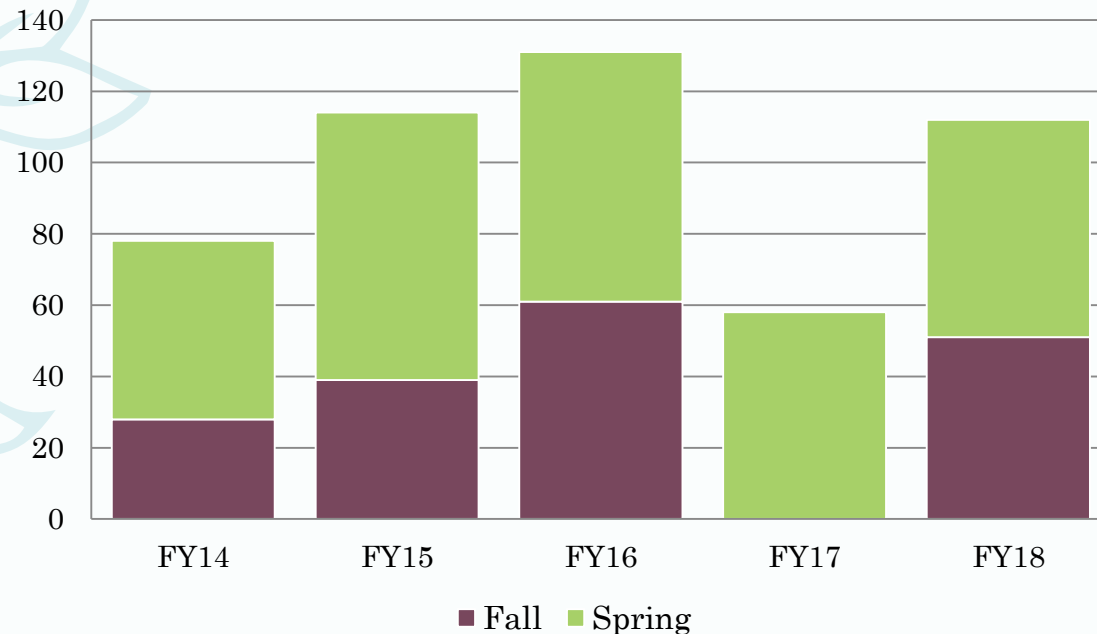


Publication Type	FY18	FY17	FY16	FY15	FY14
Books	12	11	9	10	10
Monographs, refereed articles, etc.	121	109	147	137	144
Creative activities (international)	36 (39)	90 (36)	144 (83)	150 (45)	154 (41)
Conference presentations (international)	341 (53)	362 (45)	367 (60)	420 (66)	522 (80)

(FY18 data are current through 28-Feb. 2018)

Student Research & Creative Activities

CAS UG Research Awards



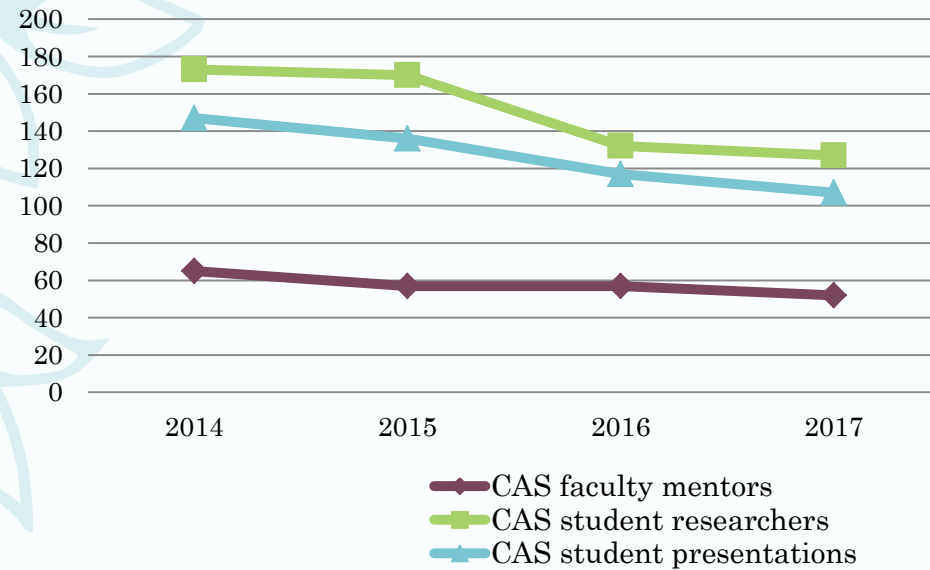
- 51 UG research awards made in Fall 2017
- 61 applicants in Spring 2018
- 10 recipients of Norman & Carmelita Teeter UG Research Awards (\$300 ea.)

Thomas E. Helm

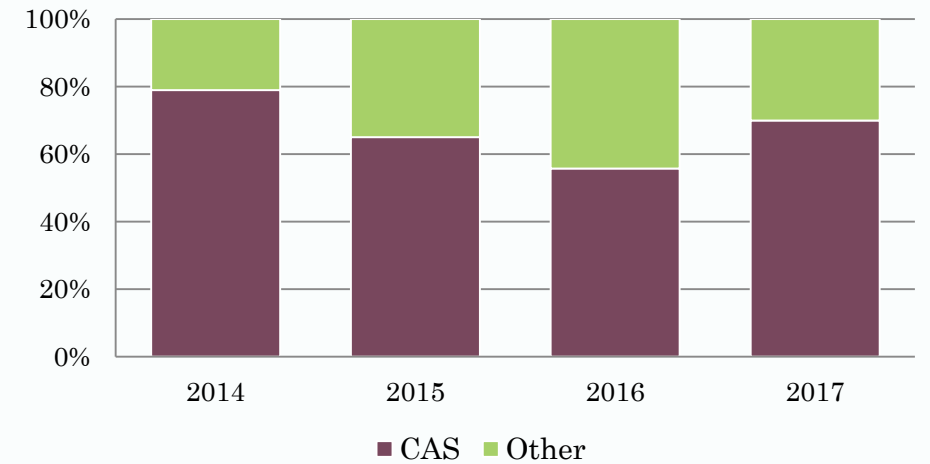
Undergraduate Research Day (URD)



CAS URD Participation 2012 - 2017



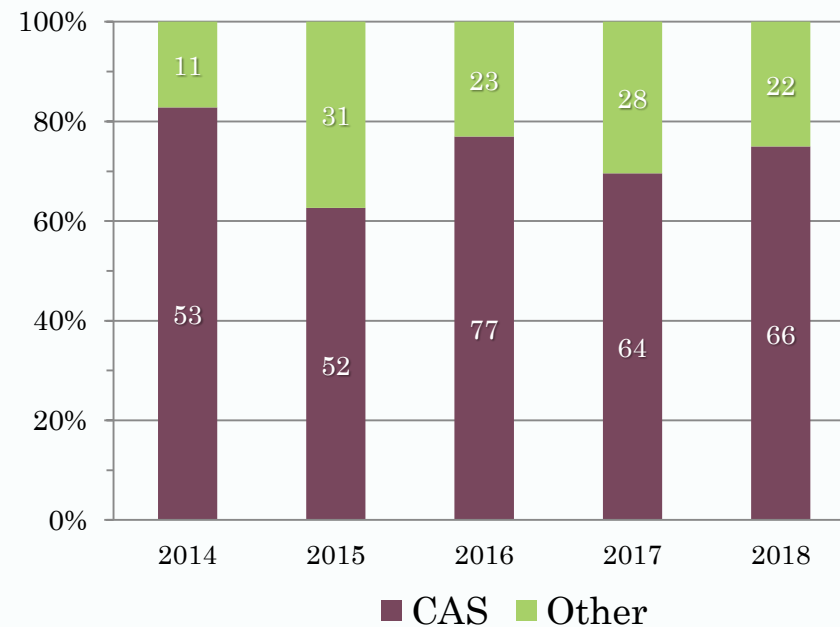
URD Presentations 2012 - 2017



5th ANNUAL

Graduate Research Conference

- CAS and departments proud cosponsors
- 66 CAS GR student participants
- 4 of 6 recipients of GR student research awards





Environmental Science Ph.D. Program

10th Annual UMRC

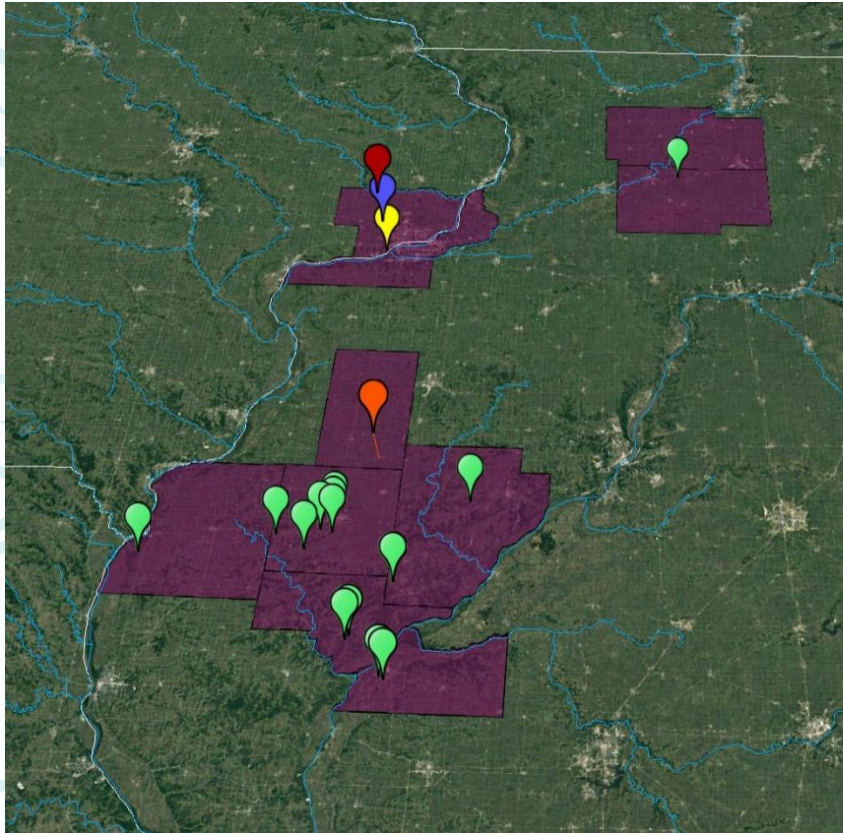
- 155 conference attendees
- Youth Summit sponsored by IES

Low Head Hydropower Workshop Co-Sponsored by IES

- 100+ attendees from industry, government, NGOs, *etc.*
- Held at WIU-QC in July 2017

Support for RISE





Six ES Ph.D. candidates work in 9 Illinois counties and 1 Iowa county on issues related to:

- Vector biology
- Hazardous waste site assessment and remediation
- Aquatic environmental ecology
- Aquatic fungal ecology
- Fluvial geomorphology

ES Ph.D. student, Michele Rehbein, recently secured funding for her dissertation research at Nachusa Grasslands.

- Michele studies the effects of microhabitats on mosquito abundance and movement in slow and stagnant waters.





Research Inspiring Student Excellence

Providing inquiry-based learning experiences to highly talented students to help them become the leaders of tomorrow

Scholarships offered to support:

- four \$3,000 scholarships for UG student summer research
- scholarships for members of under represented groups
- travel awards to attend conferences
- graduate school applications

Supported by:

- P. James Nielsen (BIOL Emeritus Faculty)
- Margaret and Cecilia Wong (WIU Class of '73)
- Frank Rodeffer (WIU Class of '61)

Engagement of High School Students & Teachers



2018: RISE-Research Opportunities for High School Students

- Support for research participation by three students from Southeastern High School (SEHS) in Augusta, IL.

2017: NSF-Research Experience for Teachers

- Support for research participation by S. Christopher Foster, science teacher at SEHS.

These efforts are led by T. Tobias, ES Ph.D. candidate, and Dr. A. Porrás-Alfaro of WIU's Fungal Ecology Laboratory





Inaugural Dual Enrollment Program with Cambridge High School

- Prof. Mark Mossman taught ENGL 180 at Cambridge High School in Fall 2017.
- He is teaching a literature class in Spring 2018.

Co-leadership of Education Summits - President's Executive Institute



Enhance Academic Affairs Role in Enrollment Management & Student Success



CENTENNIAL HONORS COLLEGE

Support for the Centennial Honors College

- Mentoring students for nationally competitive scholarships
 - Prof. Keith Bockelman – Truman Scholarship
 - Prof. Mark Boley – Goldwater Scholarship
 - Prof. Roger Viadero – Udall Scholarship
- Strong participation in Thomas E. Helm URD



Internships, Civic Learning, & Service Learning

Focus on Internships - Maintain and continually improve the CAS internship web site, “Opportunity Knocking”
<http://www.wiu.edu/cas/about/internships/index.php>

“After interning, I was offered a position teaching wildlife and nature programs and I now work there during university breaks. I love what I'm doing ...”

- Sarah Wilcer (BIOL), intern at Lyman Woods

Internships, Civic Learning, & Service Learning (continued)



Megan Nguyen (LEJA major, PSYC minor) is interning for Sen. Tammy Duckworth (D-IL) in Spring 2018

www.wiu.edu/wiuindc



Internships, Civic Learning, & Service Learning (continued)

CHEM

- CHEM 263: Elementary Pharmacology. Two week externships at MDH Pharmacy.

PHYS

- Physics summer internships in nuclear medicine at MDH

PSYC

- 5 Clinical Community Mental Health GR students interned at mental health facilities throughout IL.
- 6 School Psychology GR students interned at special education co-ops and school districts in IL, IA, and NC.
- 16 UG students volunteered at WIU's Student Crisis Hotline.

Internships, Civic Learning, & Service Learning (continued)



Maintained support for critical student research & experiential learning programs.

Support for Learning Outside the Classroom

Living-Learning Communities



Bio Life



Community of Liberal Arts & Sciences Students



Women in Science

COMING SOON

CAS pre Law

The Social Entrepreneurship Salon

Western Illinois University – Quad Cities,
3300 River Dr., Riverfront Hall 103/104

Mega Trends In Social Entrepreneurship

Sep. 7, 2016, 3:30PM

*Tom Trone,
Professor and Former
John Deere Executive*

Public/Private Partnerships: The Florencia Neighborhood

Oct. 26, 2016, 3:30PM

*Annisa Wanat,
Global Communities, Inc.*

2016

2017

The "For Purpose" Business Model

Mar. 23, 2017, 3:30PM

*Mike Horsfield,
Rock Valley Physical
Therapy*

The Local/Organic Foods Movement

Feb. 2, 2017, 3:30PM

*Chad Summers,
Healthy Harvest Urban
Farms*



WESTERN
ILLINOIS
UNIVERSITY
Quad Cities

Community Engagement

- Social Entrepreneurship Salon at WIU- QC.
- External speakers discussing community and enterprise development.
- Focus on promoting community well-being as the bottom line outcome.
- A collaborative effort between CBT, CoFAC, and COEHS.

Partnering with External Stakeholders



New 3 + 3 agreement

John Marshall Law School & WIU 3 + 3 Agreement
(HIST, POLS, & ENGL)



WESTERN
ILLINOIS
UNIVERSITY



THE
JOHN MARSHALL
LAW SCHOOL



Focus on International Recruiting & Educational Opportunities

Increase Participation & Number of Study Abroad Opportunities



Summer 2017
WISE Costa Rica
(FLL, 5)



Spring 2018
England (HIST, 8)
Ireland (NURS,
10)



Summer 2018
Puerto Rico
(ANTH, 14*)
WIFI France
(FLL, 12*)

** applicants*



Strengthen Academic Programs

Cyclical Program Reviews

FY18 IBHE program reviews

- Ph.D. in Environmental Science (New Program Progress Report)
- BA in French Teacher Education, Spanish Teacher Education, Foreign Languages and Cultures

*3 year follow-up
delayed until FY19*

FY19 IBHE program reviews

- Bachelor of Liberal Arts and Sciences
- Master of Liberal Arts and Sciences
- B.S. in Biology
- M.S. in Biology
- PBC in Zoo and Aquarium Studies
- B.S. in Geology
- Post-Baccalaureate Certificate in GIS Analysis
- B.S. in Clinical Laboratory Science



Strengthen Academic Programs

Discipline-Specific Accreditation

Nursing accreditation

- 100% NCLEX pass rate

Teacher Education

Accreditation by Specialized Professional Associations

- Mathematics
- Foreign Languages and Cultures

M.S. in Clinical/Community Mental Health

- Accreditation extended for 10 years by the Masters in Psychology and Counseling Accreditation Council

American Chemical Society accredited (CHEM)



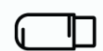
Technology & Facilities

Technology Goals

- Hire a webmaster/social media manager.
- Continue to address aging technology infrastructure – focus on connectivity.
- Replace faculty and staff computers.



28 computers > 10 years old



134 computers 6 to 9 years old



Fiscal Responsibility & Accountability



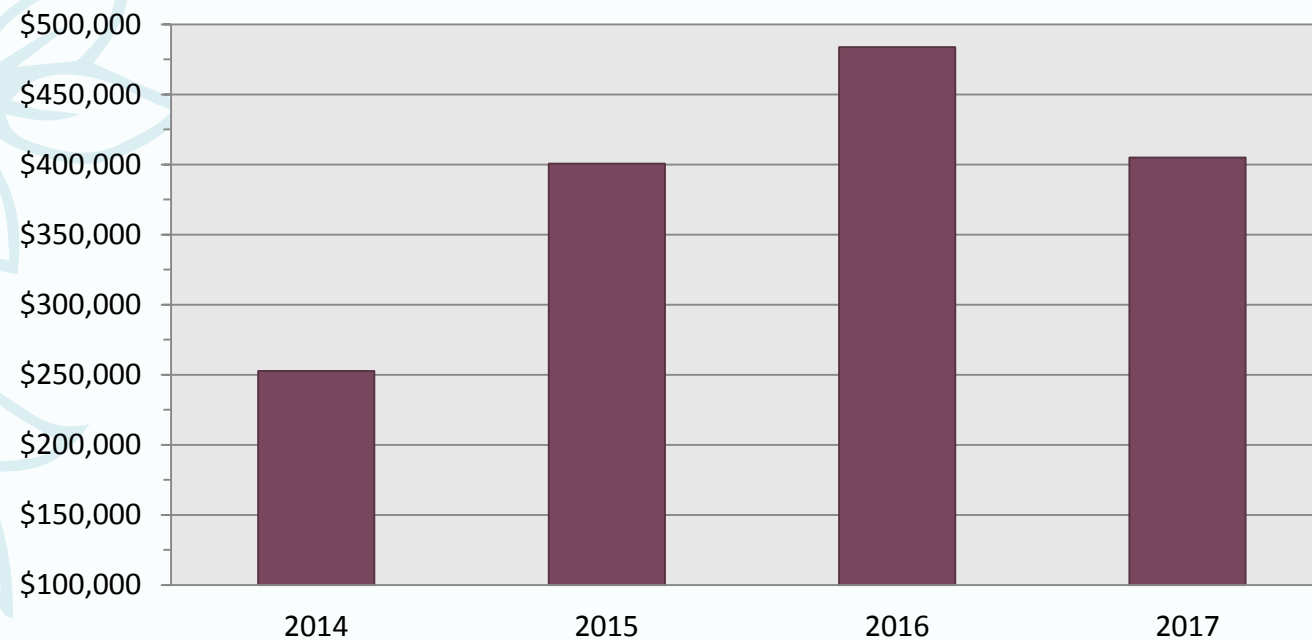
FY18 Budget Summary

Budget Reduction

– \$1,769,136 continuous reduction

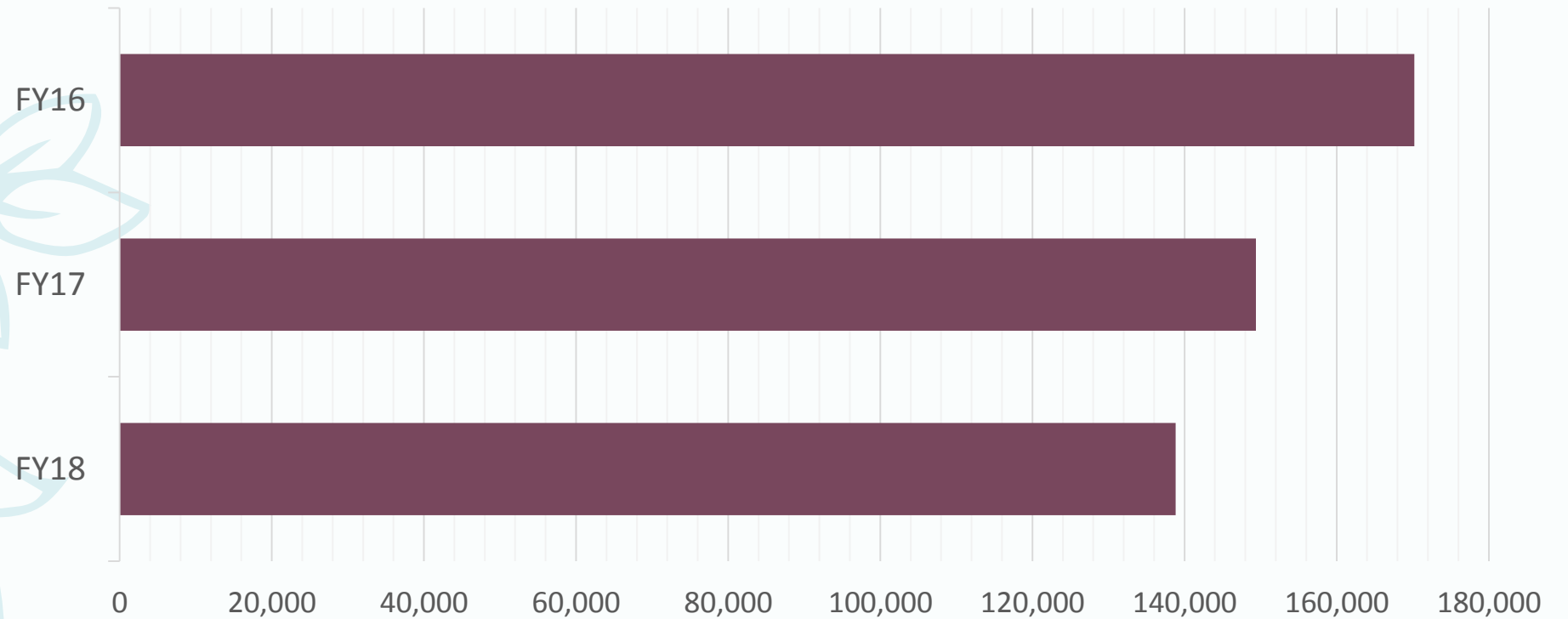
WIU Foundation Funds

Annual Foundation Expenditures



74% used to support student scholarships

Lab Charges



Data are presented through the end of February of each respective FY.

Grants, Contracts & Local Accounts

	FY18	FY17	FY16	FY15
Grants & Contracts				
Number of proposals submitted	25	15	28	18
Funds requested	\$2.2M	\$4.2M	\$3.0M	\$2.35M
Funds received	\$1.2M	\$708,753	\$827,240	\$576,829
Local Accounts	\$146,050	\$127,776	\$132,337	\$119,210

FY18 data through 28-Feb. 2018

FY18 Budget Request

Personnel, equipment, & operating

UNIT	PRIORITY	TITLE OF FUNDING REQUEST	1-TIME FUNDING (FY19 ONLY)	CONTINUOUS FUNDING (BEGIN FY19)		CONTINUOUS FUNDING (BEGIN FY20)	
				AMOUNT	# / P	AMOUNT	# / P
CAS	1	Hire a Webmaster/Social Media Relations Manager		\$40,872	P		
NURS	2	Birthing Bed	\$2,900				
BIOL	3	Install Emergency Shower and Eyewash Stations	\$14,000				
SOC	4	Rehire Unit B Faculty		\$34,308	P		
CHEM/GEOL	5	Renovation of CH 124 for NSF Grant-funded Scanning Electron Microscope	\$9,300				
CAS	6	Hire Grant Writer for CAS – explore possible split position with CoEHS		\$40,872	P		
CHEM	7	Reassignment of Unit B faculty to Unit A in Department of Chemistry		\$21,222	P		
PHYS	8	Upgrade Lower Division Physics Labs		\$16,000	P		
POLS	9	Travel Funds for Mock Trial Team		\$5,000	P		
CHEM	10	Ventilated Chemical Cabinets for Chemical Stockroom CH123	\$10,000				
LAS	11	Graduate Assistant for MLAS Program		\$9,430	P		
PSYCH	12	Hire Tenure-Track Forensic Psychologist		\$57,861			
CHEM	13	Replace Aging UV-Vis Spectrometers	\$15,000				
PHYS	14	Upper Division and GR Lab Equipment and Computational Upgrades for Physics		\$50,000	1	\$63,000	1
CAS	15	Replace Faculty and Staff Computers	\$20,000				
CAS	16	Modifications to insure ADA compliance in MG 101B	\$33,100				
MATH	17	Hire Department Chair for Department of Mathematics and Philosophy				\$105,776	P
CHEM	18	Renovation Costs Associated with an NSF-MRI Proposal for Mass Spec.	\$15,000				
NURS	19	Develop Doctorate in Nursing Practice (DNP) Program	\$41,267			\$111,596	P
TOTALS			\$160,567	\$ 275,565		\$280,372	

FY18 Budget Request

Facilities

UNIT	PRIORITY	TITLE OF FUNDING REQUEST	1-TIME FUNDING (FY19 ONLY)		CONTINUOUS FUNDING (BEGIN FY19)		CONTINUOUS FUNDING (BEGIN FY20)	
			AMOUNT	# / P	AMOUNT	# / P	AMOUNT	# / P
CAS	F1	Construction of New Science Building and Remodel of Currens Hall					\$61,138,000	1
BIOL	F2	Construction of New Classroom/Lab Building at Kibbe Field Station			\$495,764	1		



Many thanks
for your time &
attention



May the CARP
be with you